

Production Impact Update

New data on the production impact of Porcine Epidemic Diarrhea virus (PEDv) outbreaks has been analyzed after introducing new herds to the model and extending the number of weeks post-infection in previously-participating herds. We now have production records from 208 herds that have experienced a PEDv outbreak or re-break since its emergence in the US in 2013.

Excluding batch farrowing units and re-breaks, we analyzed time to baseline production (TTBP) in 188 outbreaks of original US PEDv (Figure 1) and 10 outbreaks of S-INDEL variant PEDv (Figure 2). Time to baseline more with original PEDv was 13.1 (12.1, 14.2) weeks which was significantly more than with S-INDEL variant PEDv which was 8.4 (5.4, 11.4) weeks. Pigs not weaned was 2.8 (2.6, 3.0) pigs per sow and 1.7 (0.9, 2.4) pig per sow for the original PEDv and S-INDEL variant strains, respectively.

Figure 1

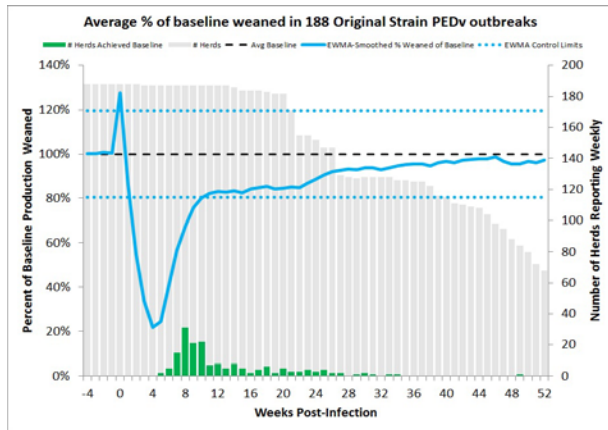
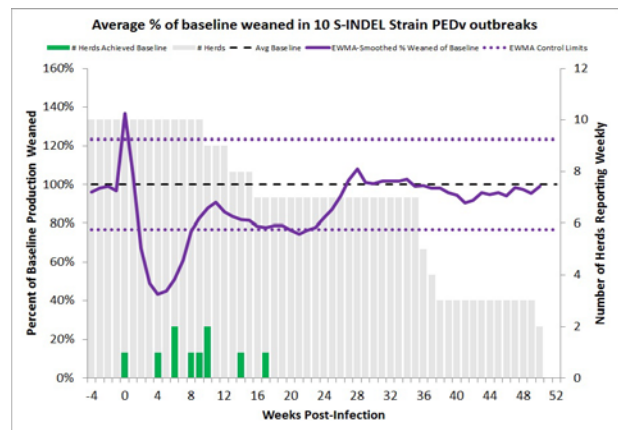


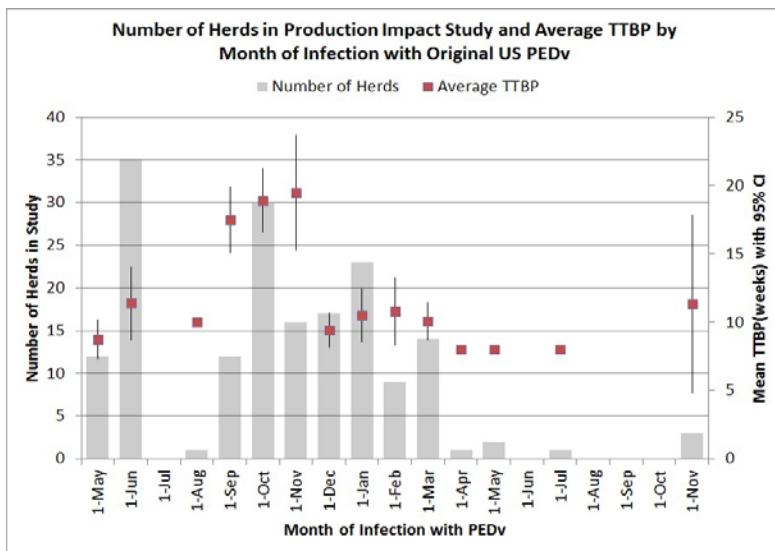
Figure 2



At the time of this writing, 12 / 188 herds (6%) have not reached baseline production following infection with original US PEDv compared to 0% of S-INDEL herds that have not reached baseline production.

Preliminary analysis of the data suggest that outbreaks beginning in September, October, and November had significantly increased TTBP W compared to other months of the year (Figure 3).

Figure 3



We will have a more detailed presentation of these data at this year's American Association of Swine Veterinarians annual conference.